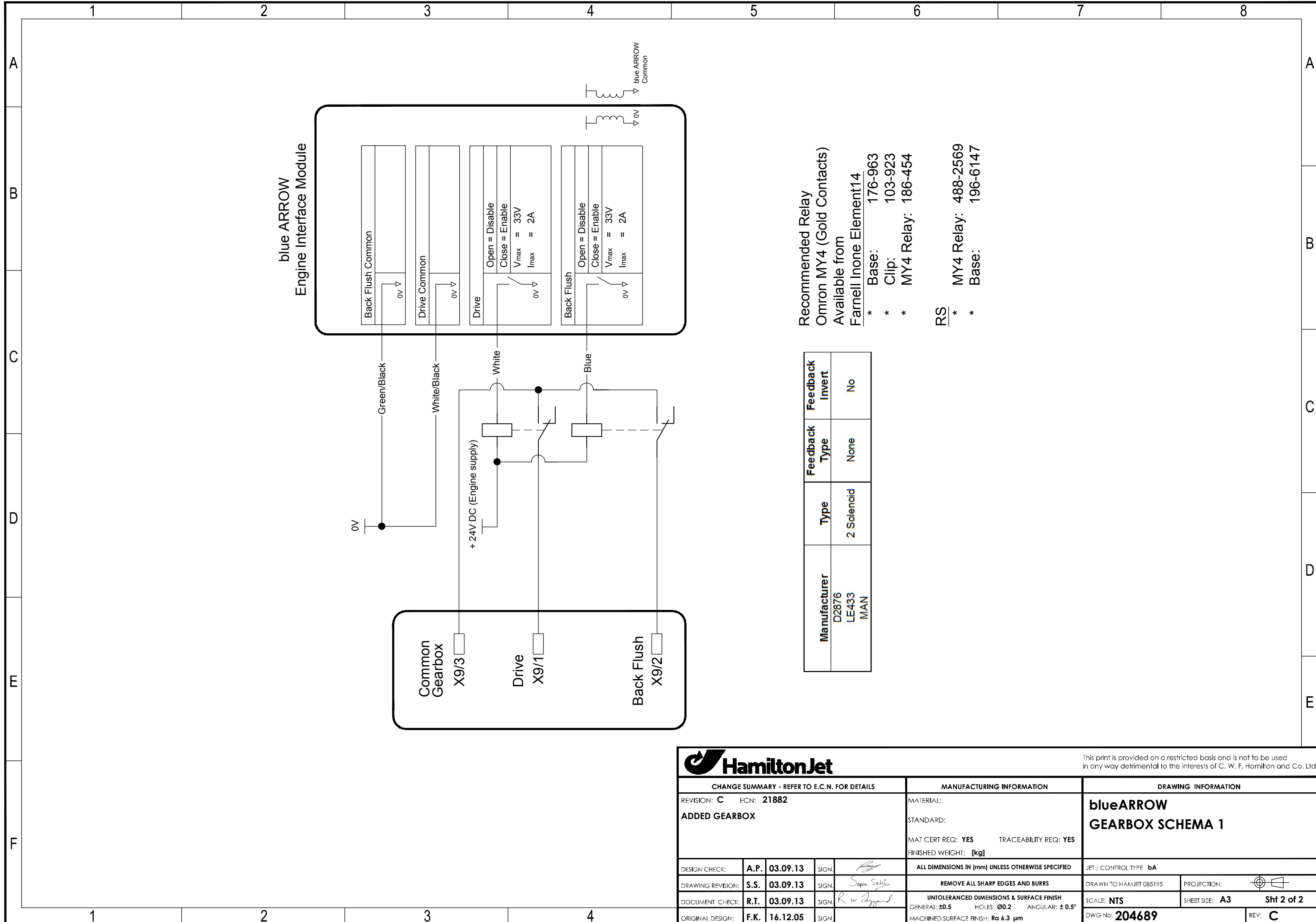
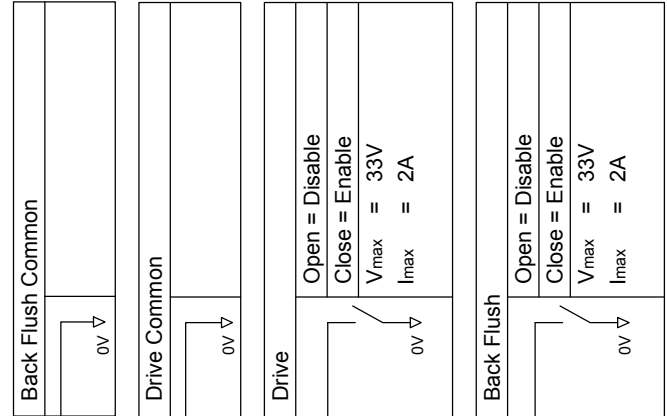


NOTE:
 FLYWHEEL DIODE ACROSS SOLENOID COIL TYPICAL 1N5406 -
 6A 400V SILICON DIODE FITTED WITHIN SOLENOID CONNECTOR
 IF POSSIBLE.

HamiltonJet				This print is provided on a restricted basis and is not to be used in any way detrimental to the interests of C. W. F. Hamilton and Co. Ltd			
CHANGE SUMMARY - REFER TO E.C.N. FOR DETAILS				MANUFACTURING INFORMATION		DRAWING INFORMATION	
REVISION: C ECN: 21882				MATERIAL:		blueARROW GEARBOX SCHEMA 1	
ADDED GEARBOX				STANDARD:			
				MAT CERT REQ: YES TRACEABILITY REQ: YES			
				FINISHED WEIGHT: [kg]			
DESIGN CHECK:	A.P.	03.09.13	SIGN.	ALL DIMENSIONS IN [mm] UNLESS OTHERWISE SPECIFIED		JET / CONTROL TYPE bA	
DRAWING REVISION:	S.S.	03.09.13	SIGN.	REMOVE ALL SHARP EDGES AND BURRS		DRAWN TO HAMILJET 085195	
DOCUMENT CHECK:	R.T.	03.09.13	SIGN.	UNTOLERANCED DIMENSIONS & SURFACE FINISH		PROJECTION:	
ORIGINAL DESIGN:	F.K.	16.12.05	SIGN.	GENERAL: ±0.5 HOLES: 00.2 ANGULAR: ± 0.5°		SCALE: NTS SHEET SIZE: A3 Sht 1 of 2	
				MACHINED SURFACE FINISH: Ra 6.3 µm		DWG No: 204689 REV: C	



blue ARROW
Engine Interface Module



Recommended Relay
Omron MY4 (Gold Contacts)
Available from
Farnell Inone Element14

- * Base: 176-963
- * Clip: 103-923
- * MY4 Relay: 186-454

RS

- * MY4 Relay: 488-2569
- * Base: 196-6147

Manufacturer	Type	Feedback Type	Feedback Invert
D2876 LE433 MAN	2 Solenoid	None	No

				This print is provided on a restricted basis and is not to be used in any way detrimental to the interests of C. W. F. Hamilton and Co. Ltd			
CHANGE SUMMARY - REFER TO E.C.N. FOR DETAILS REVISION: C ECN: 21882 ADDED GEARBOX				MANUFACTURING INFORMATION MATERIAL: STANDARD: MAT CERT REQ: YES TRACEABILITY REQ: YES FINISHED WEIGHT: [kg]		DRAWING INFORMATION blueARROW GEARBOX SCHEMA 1	
DESIGN CHECK:	A.P.	03.09.13	SIGN.	ALL DIMENSIONS IN [mm] UNLESS OTHERWISE SPECIFIED		JET / CONTROL TYPE bA	
DRAWING REVISION:	S.S.	03.09.13	SIGN.	REMOVE ALL SHARP EDGES AND BURRS		DRAWN TO HAMJET 085195 PROJECTION:	
DOCUMENT CHECK:	R.T.	03.09.13	SIGN.	UNTOLERANCED DIMENSIONS & SURFACE FINISH GENERAL: ±0.5 HOLES: Ø0.2 ANGULAR: ± 0.5°		SCALE: NTS SHEET SIZE: A3 Sht 2 of 2	
ORIGINAL DESIGN:	F.K.	16.12.05	SIGN.	MACHINED SURFACE FINISH: Ra 6.3 µm		DWG No: 204689 REV: C	